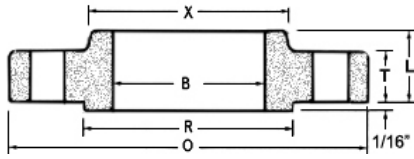


ANSI B16.5 Class 1500 slip on forged flange



The slip-on flange has a low hub because the pipe slips into the flange prior to welding. It is welded both inside and out to provide sufficient strength and prevent leakage. Slip-on flanges are all bored slightly larger than the O.D. of the matching pipe. They are preferred over welding neck flanges by many users due to their lower initial cost, but final installation cost is probably not much less than that of the welding neck flange because of the additional welding involved.

Slip on forged flange

Nom. Pipe Size	O	T	R	X	#/Dia of Holes ^a	Bolt Circle Dia	B	B ₂ ^b	B ₃	H	L	L ₂	L ₃ ^c	r	C	D	Thr
3/4	5.12	1	1.69	1.75	4-0.88	3.5	1.09	To be specified by Purchaser.	1.11	1.05	1.38	2.75	1.38	0.12	1.14	0.44	1
1	5.88	1.12	2	2.06	4-1.00	4	1.36		1.38	1.32	1.62	2.88	1.62	0.12	1.41	0.5	1.12
1 1/4	6.25	1.12	2.5	2.5	4-1.00	4.38	1.7		1.72	1.66	1.62	2.88	1.62	0.19	1.75	0.56	1.19
1 1/2	7	1.25	2.88	2.75	4-1.12	4.88	1.95		1.97	1.9	1.75	3.25	1.75	0.25	1.99	0.62	1.25
2	8.5	1.5	3.63	4.12	8-1.00	6.5	2.44		2.46	2.38	2.25	4	2.25	0.31	2.5	0.69	1.5
2 1/2	9.62	1.62	4.13	4.88	8-1.12	7.5	2.94		2.97	2.88	2.5	4.12	2.5	0.31	3	0.75	1.88
3	10.5	1.88	5	5.25	8-1.25	8		3.6	3.5	4.62	2.88	0.38
4	12.25	2.12	6.19	6.38	8-1.38	9.5		4.6	4.5	4.88	3.56	0.44
5	14.75	2.88	7.31	7.75	8-1.63	11.5		5.69	5.56	6.12	4.12	0.44
6	15.5	3.25	8.5	9	12-1.50	12.5		6.75	6.63	6.75	4.69	0.5
8	19	3.62	10.63	11.5	12-1.75	15.5		8.75	8.63	8.38	5.62	0.5
10	23	4.25	12.75	14.5	12-2.00	19		10.92	10.75	10	7	0.5
12	26.5	4.88	15	17.75	16-2.12	22.5		12.92	12.75	11.12	8.62	0.5
14	29.5	5.25	16.25	19.5	16-2.38	25		14.18	14	11.75	9.5	0.5
16	32.5	5.75	18.5	21.75	16-2.63	27.75		16.19	16	12.25	10.25	0.5
18	36	6.38	21	23.5	16-2.88	30.5		18.2	18	12.88	10.88	0.5
20	38.75	7	23	25.25	16-3.12	32.75		20.25	20	14	11.5	0.5
24	46	8	27.25	30	16-3.63	39		24.25	24	16	13	0.5

Dimensions are in inches.

- (a)- Bolt hole diameter 1/8 in. larger than bolt diameter.
- (b)- Standard bore dimensions provided. See bore chart for other wall thicknesses.
- (c)- This dimension is commonly associated with "true" lap joints. Industry standard is to make to the slip on length through the hub.

We are a professional flange, forged flange, stainless flange, carbon flange manufacturer in china.

flange

flanges

flange